

# SMA Connector Data Sheet



## ■ Part No. : PAF-S00-000

(SMA 4-Hole Panel Mount Jack with Round Pin)

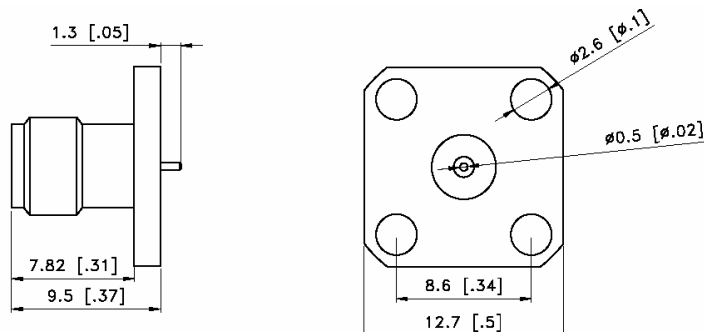


### Technical Data

<b>Electrical Data</b>	<b>Impedance</b>	50 Ω
	<b>Max. Frequency</b>	6 GHz
	<b>Insulation Resistance</b>	Min. 5 GΩ
<b>Mechanical Data</b>	<b>Force to Engage/Disengage</b>	2.0 pounds max.
	<b>Durability</b>	500 mating cycles
	<b>Recommended Mating Torque</b>	7 to 10 inch-pounds
<b>Environmental Data</b>	<b>Operating Temp.</b>	-40 °C ~125 °C
	<b>Vibration</b>	MIL-STD-202
	<b>Shock</b>	MIL-STD-202
	<b>RoHS</b>	Compliant

<b>Material Data</b>		<b>Material</b>	<b>Surface Plating</b>
	<b>Center Contact</b>	BeCu	Gold Plating on Nickel
	<b>Body</b>	Brass	Gold Plating on Nickel
	<b>Insulator</b>	PTFE	

### Outline Drawing



Unit : mm [inch]

### Part Number

**Part No.**  
(OLD P/N)

**PAF-S00-000**  
(OLD: PAF-S00)